

Design R0262

Shawl with crochet fringe



Size: 160 x 80 cm

Materials: Regia 6-ply Digital Color,
400 g in col 006973 Site Color.
Size 4 mm Regia circular needle.
Size 4 mm crochet hook.

Stockinette: K on RS, p on WS.

Garter st: K every row.

Slip stitch edge: On RS rows, knit the first and last 3 sts; on WS rows, slip the first and last 3 sts as if to purl with yarn in back of work.

Gauge: 20 sts and 31 rows = 10 x 10 cm in stockinette on size 4 mm needles.

Instructions:

With size 4 mm circular needle, cast on 11 sts. Next WS row: Work slip st edge, p5, work slip st edge. Next, work in chart pat as foll:

Row 1: Work slip st edge, k1, (k1, p1) in each of next 4 sts, work slip st edge = 15 sts.

Row 2: Work slip st edge, purl to last 3 sts, work slip st edge.

Row 3: Work slip st edge, k1, yo, k4, yo, k4, work slip st edge = 17 sts.

Cont in pat as established, repeating rows 4 and 5 until 443 sts are on the needle. The number of sts between the first and 2nd yo will increase by 1 st on every row and the number of sts between the 2nd yo and the slip st edge will increase by 1 st on every row = 2 sts increased on every row.

Next, work in garter st for 10 rows, then bind off all sts loosely.

Finishing:

Make and attach fringe: For each fringe, cut a 70 cm long strand of yarn. Insert crochet hook into bound-off st from WS, fold strand of yarn in half to form a loop, draw loop through fabric, chain 12, cut yarn and fasten off. Attach 1 fringe in every 4th bound-off st.

Chart

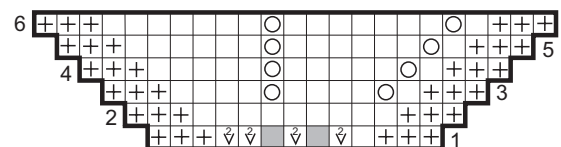


Chart Key

■ = blank squares on charts represent "no stitch" and are included to keep st count correct

□ = k1 on RS rows, p1 on WS rows

+++ = slip stitch edge

○ = yarnover

▽ = k1, then p1 in same stitch